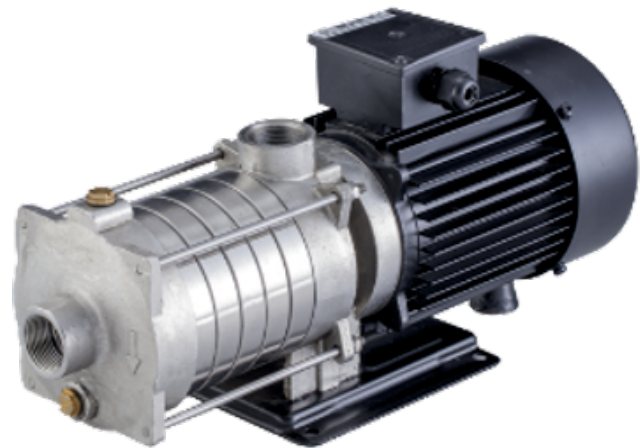


# HORIZONTAL MULTISTAGE PUMPS MH SERIES

C.R.I. Horizontal Multistage Inline Pumps are products of expertise gained from over five decades of experience, endurance and workmanship. C.R.I. products are engineered to perfection with utmost care and stringent quality control at all stages to ensure a trouble-free service.



## SALIENT FEATURES

- Zero maintenance mechanical seal
- C.R.I.'s reliability & quality assurance
- Wide application options
- Electrical motor IE class upto IE 3
- High accurate balanced shaft bearing
- Quicker after sales service accessibility across India

## APPLICATIONS

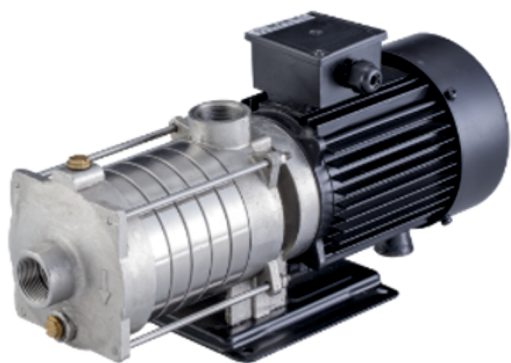
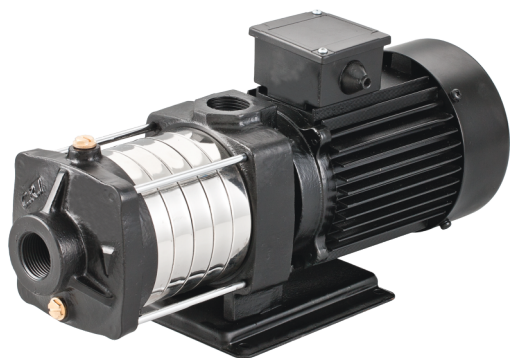
- Boosting Systems in High rise buildings, hotels, Industries, etc.,
- Industrial Washing Systems & High-pressure cleaning
- Modern Irrigations such as Sprinkler; Drip feeds, etc.,
- Reverse Osmosis Systems & Ultra Filtration Systems
- Landscapes | Condensate | Boiler Feed | Fire Fighting
- Hot & Cold-water Circulation
- Cooling Systems / Air Conditioning System

# HORIZONTAL MULTISTAGE PUMPS

## MH SERIES

### MATERIAL OF CONSTRUCTION

Part Name	MHC	MHS	MHS
Pump Casing	Cast Iron	SS 304	SS 316
Pump Bracket	Cast Iron	SS 304	SS 316
Impeller	SS 304	SS 304	SS 316
Diffuser	SS 304	SS 304	SS 316
Pump Shaft	SS 410	SS 410	SS 316
Mechanical Seal	Sic & Carbon	Sic & Carbon	Sic & Carbon
Base Plate	Mild Steel	Mild Steel	Mild Steel



### PERFORMANCE RANGE / OPERATION LIMITS

Max. Power	:	2.2 kW
Max. Flow	:	14.0 m <sup>3</sup> /h
Max. Head	:	50 m
Max. Liquid Temp	:	90° C

### C.R.I. PUMPS PRIVATE LIMITED

Regd. Office : 7/46-1, Keeranatham Road, Saravanampatti,  
Coimbatore - 641035. Tamilnadu, INDIA.

Phone : +91-422-7117000/1, Fax : +91-422-7117005.

E-mail : [bcsmt@cripumps.com](mailto:bcsmt@cripumps.com) [www.crigroups.com](http://www.crigroups.com)

Authorised Dealer :