



C.R.I. PUMPS
Pumping trust... Worldwide.



ONE STOP PUMPING SOLUTIONS...



C.R.I. PUMPS

Pumping trust... Worldwide.

T H E B E G I N N I N G

of C.R.I., way back in 1961, was a resolute attempt to produce a few irrigation equipments using the limited facilities of an in-house foundry. Eventually the founder's dream was coming true as the small production unit he started kept growing rapidly. Now, after more than five eventful decades, it is an enormous, widely reputed organization, which produces more than 1500 varieties of perfectly engineered pumps and motors and sells its products in numerous countries spread across 6 continents.

C . R . I . I S O N E A M O N G

the few pioneers in the world to produce 100% stainless steel submersible pumps. Having achieved a record production capacity of over 2 million pumps per annum, today C.R.I. is rubbing its shoulders with the best brands in the world, with advanced technology and safety standards as its hallmarks.

T H E I N F R A S T R U C T U R E

of C.R.I. is pretty comprehensive with state-of-the-art machineries and high potential in-house R&D recognised by the ministry of science and technology, Govt. of India - all within its own covered area of 300,000 square metres. The production environment is accredited with ISO 9001 & 14001 certifications and the products are CE, UR/UL, IEC, TSE & ISI certified. The R&D team always stays in tune with the changing scenario and seldom fails in coming up with outstanding solutions every time.

N E E D L E S S T O S A Y ,

behind this legendary growth lies the untiring, innovative, enthusiastic and dedicated team work. and, of course, a flawlessly maintained value system too. The name C.R.I. itself encapsulates the company's ethos: " Commitment, Reliability, Innovation".





C.R.I. PUMPS
Pumping trust... Worldwide.

Vision, Mission and Values

To be the industry leader providing best - in - class fluid management solutions to individual and institutional customers and societies in our chosen markets.

We will achieve this through our dedicated efforts to enhance the welfare of all our stakeholders and by living by our values of **commitment, reliability and innovation.**



MV SERIES**VERTICAL MULTISTAGE INLINE PUMPS****Specifications**

| | |
|------------------|------------|
| Max. Flow | : 200 m³/h |
| Max. Head | : 320 m |
| Max. Liquid Temp | : 120° C |
| Max. Pressure | : PN 40 |

Applications

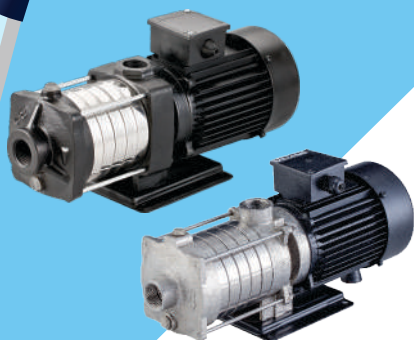
| Pressure Boosting | Pumping Clean Liquid in Industries.
 | Reverse Osmosis & DM Plant | Boiler Feed | Fire Fighting
 | Hot & Cold Water Circulation | Industrial Washing
 | Modern Irrigation such as sprinkler, Drip irrigation

MVNB SERIES**VERTICAL MULTISTAGE INLINE PUMPS****Specifications**

| | |
|------------------|------------------|
| Max. Flow | : 66 m³/h |
| Max. Head | : 46 bar (460 m) |
| Max. Power | : 45 kW |
| Max. Liquid Temp | : 120° C |

Applications

| Industrial Washing Systems - CIP/SIP; Bottle Washing
 | Paint Booths; Cooling; Desalination
 | Reverse Osmosis Systems & Ultra Filtration Systems
 | Filter Press

MH SERIES**HORIZONTAL MULTISTAGE PUMPS****Specifications**

| | |
|------------------|-----------|
| Max. Flow | : 25 m³/h |
| Max. Head | : 50 m |
| Max. Power | : 7.5 kW |
| Max. Liquid Temp | : 90° C |

Applications

| Boosting Systems | Industrial Washing Systems
 | Modern Irrigations | Reverse Osmosis & Ultra Filtration
 Systems | Boiler Feed | Hot & Cold Water Circulation

MVHS SERIES



HYDRO PNEUMATIC PRESSURE BOOSTING SYSTEM

Specifications

| | |
|------------------|--------------------------|
| Max. Flow | : 1200 m ³ /h |
| Max. Head | : 160 m |
| Max. Power | : 110 kW |
| Max. Liquid Temp | : 70° C |

Applications

- | Pressure Boosting | High pressure water supply
- | Industries & Hospitals | Hotels | Apartments
- | Commercial Buildings | Industrial water supply

ISOBARIC SERIES



PRESSURE BOOSTING SYSTEM

Specifications

| | |
|------------------|-------------------------|
| Max. Flow | : 100 m ³ /h |
| Max. Head | : 50 m |
| Max. Power | : 7.5 kW |
| Max. Liquid Temp | : 70° C |

Applications

- | Pressure Boosting | Residential Buildings
- | Apartments, Bungalows & Schools | Cottage & Villas,
- | Hospitals | Industries & Sprinkler Irrigation System
- | Water Transfer

GB / MC / KC SERIES



SUBMERSIBLE SEWAGE PUMPS

Specifications

| | |
|------------------|---|
| Max. Flow | : 2500 m ³ /h |
| Max. Head | : 70 m |
| Max. Power | : 185 kW |
| Max. Liquid Temp | : 40° C |
| Max. Solid Size | : 165 mm |
| Max. Outlet Size | : 400 mm |
| Impeller Type | : Vortex; Cutter; Mono/ Multi channel; |

Applications

- | STP & ETP Plants | Municipal Waste Water Transfer
- | Commercial & Industrial Sewage Transfer

SUBMERSIBLE SEWAGE PUMPS**GBC SERIES****Specifications**

| | |
|-----------------|------------------------|
| Max. Flow | : 58 m ³ /h |
| Max. Head | : 18 m |
| Max. Power | : 5.5 kW |
| Max. Solid Size | : 44 mm |

Applications

| Sewage water transfer from Hotels, Houses, Buildings, etc.,
| Sewage Treatment Plants | Septic Tanks

SUBMERSIBLE SEWAGE PUMPS WITH CUTTER**GTC SERIES****Specifications**

| | |
|-----------------|------------------------|
| Max. Flow | : 30 m ³ /h |
| Max. Head | : 45 m |
| Max. Power | : 5.5 kW |
| Max. Solid Size | : 8 mm |

Applications

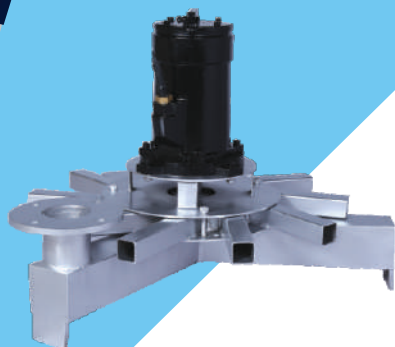
| Hotels | Tanneries | Meat Washing | Septic Tanks

SUBMERSIBLE MIXER**MD / TP SERIES****Specifications**

| | |
|-------------------------|--------------------------|
| Max. Flow | : 6702 m ³ /h |
| Max. Power | : 18.5 kW |
| Max. Influence Distance | : 70 m |

Applications

Sewage Treatment Plants : Sludge Thickening Tanks
| Homogenisation Process in Chemical | Biological of Activated
& Digested Sludge Plants | Mixing of Sewage Wet Wells
| Waste Processing – Slaughter Houses | Aquaculture
| Paper & Pulp | Paint Industries | Slurry & Bio-gas Plants
| Distilleries / Breweries

AR SERIES**SUBMERSIBLE AERATOR - DIFFUSER TYPE****Specifications**

| | |
|-------------------------|------------------------------|
| Max. Power | : 5.0 kW |
| Max. Air volume | : 125 m ³ /h |
| Max. Total Oxygen Input | : 9.0 (kg.O ₂ /h) |

Applications

| Sewage & Industrial Waste Treatment Plants | Aquaculture
 | Industrial Aeration Stabilization & Equalization Tank
 | Aeration; Mixing and Agitation for the Mixed Liquor Suspended Solids (MLSS) | Biochemical Oxygen Demand (BOD) Reduction Process | Sequencing Batch Reactors (SBR) Process

AR SERIES**SUBMERSIBLE AERATOR - JET TYPE****Specifications**

| | |
|-------------------------|------------------------------|
| Max. Power | : 5.5 kW |
| Max. Air volume | : 120 m ³ /h |
| Max. Total Oxygen Input | : 5.9 (kg.O ₂ /h) |

Applications

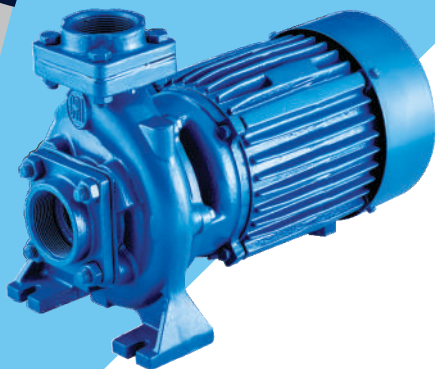
| Sewage & Industrial Waste Treatment Plants | Aquaculture
 | Industrial Aeration Stabilization & Equalization Tank
 | Aeration; Mixing and Agitation for the Mixed Liquor Suspended Solids (MLSS) | Biochemical Oxygen Demand (BOD) Reduction Process | Sequencing Batch Reactors (SBR) Process

SMB / SP SERIES**SURFACE WASTE WATER PUMPS****Specifications**

| | |
|-----------------|-------------------------|
| Max. Flow | : 277 m ³ /h |
| Max. Head | : 34 m |
| Max. Power | : 18.5 kW |
| Speed in rpm | : 1450 / 2900 |
| Max. Solid Size | : 15 mm |

Applications

| Pumping of Domestic Sewage (Polluted water, Effluent, Storm water)
 | Industrial Waste Water (Effluent, Sewage, ash-water, etc.)
 | Water from Marine (Docks, Ports & Vessels)
 | Dewatering from Construction (Foundation, Trenches)
 | Sewage transfer in STP

BP SERIES**CENTRIFUGAL MONOBLOCK PUMPS****Specifications**

| | |
|------------------|-------------------------|
| Max. Flow | : 121 m ³ /h |
| Max. Head | : 70 m |
| Max. Power | : 15 kW |
| Max. Liquid Temp | : 90° C |

Applications

| Fire Fighting – Jockey & Booster | Industrial Water Supply
 | High-Rise Building & Hotels | Pressure Boosting Cooling
 Systems | Irrigation, Etc.,

VDC SERIES**IMMERSIBLE COOLANT PUMPS****Specifications**

| | |
|------------------|------------------------|
| Max. Flow | : 20 m ³ /h |
| Max. Head | : 240 m |
| Max. Power | : 18.5 kW |
| Max. Liquid Temp | : 90° C |

Applications

| EDM Wire Cutting & Printing Machines | Boring, Milling,
 Grinding & Turning Centres | Industrial washing & Cleaning
 | Cooling System & Cutting Oils | Spark Machine Tools
 | Filtering Systems

VDS SERIES**IMMERSIBLE COOLANT PUMPS****Specifications**

| | |
|------------------|-------------------------|
| Max. Flow | : 4.0 m ³ /h |
| Max. Head | : 55 m |
| Max. Power | : 1.5 kW |
| Max. Liquid Temp | : 90° C |

Applications

| EDM Wire Cutting & Printing Machines | Boring, Milling,
 Grinding & Turning centres | Industrial washing & Cleaning
 | Cooling System & Cutting Oil | Spark Machine Tools
 | Filtering Systems

END SUCTION CENTRIFUGAL WATER PUMPS

ECW SERIES



Specifications

| | |
|------------------|-------------------------|
| Max. Flow | : 550 m ³ /h |
| Max. Head | : 120 m |
| Max. Power | : 160 kW |
| Max. Liquid Temp | : 90° C |
| Speed in rpm | : 1450 / 2900 |
| Max. Pump Size | : DN 150 |

Applications

| Water Supply | HVAC | Modern Irrigations
 | Pressure Boosting | Industrial Utility
 | Fire Fighting | Cooling Towers

CLOSE COUPLED PUMPS

CCW SERIES



Specifications

| | |
|------------------|-------------------------|
| Max. Flow | : 550 m ³ /h |
| Max. Head | : 120 m |
| Max. Power | : 45 kW |
| Max. Liquid Temp | : 90° C |
| Speed in rpm | : 1450 / 2900 |
| Max. Pump Size | : DN 150 |

Applications

| Water Supply | HVAC | Modern Irrigations
 | Pressure Boosting | Industrial Utility
 | Fire Fighting | Cooling Towers

VERTICAL INLINE PUMPS

VS / VC SERIES

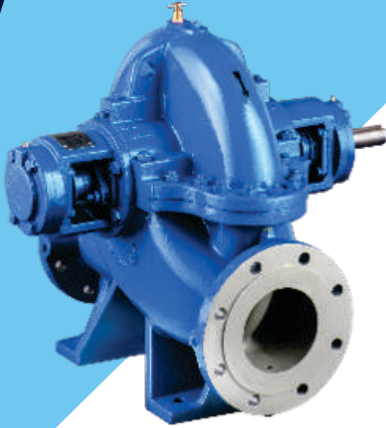


Specifications

| | |
|------------------|-------------------------|
| Max. Flow | : 450 m ³ /h |
| Max. Head | : 140 m |
| Max. Power | : 90 kW |
| Max. Liquid Temp | : 85° C |

Applications

| HVAC | Fire Fighting | Pressure Boosting
 | Water Supply | Cooling Towers | Cold & Hot Water
 Circulation | Industrial Utility Water | Modern Irrigation

SCW SERIES**HORIZONTAL SPLIT CASE PUMPS****Specifications**

| | |
|-----------|--------------------------|
| Max. Flow | : 8000 m ³ /h |
| Max. Head | : 350 m |

Applications

| Water Supply | Cooling Towers | Thermal Power Plant
| HVAC | Fire Fighting | Pressure Boosting Systems
| Steel Plants | Paper | Sugar Industries | Industrial Utility
| Dewatering in Mines | Flood Control
| Water & Effluent Treatment | Desalination | Irrigation

AF SERIES**AXIAL FLOW PUMPS****Specifications**

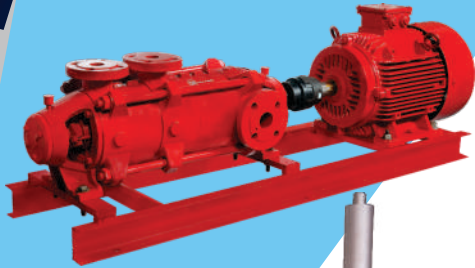
| | |
|------------|---------------------------|
| Max. Flow | : 38000 m ³ /h |
| Max. Head | : 5 m |
| Motor Type | : Surface / Submersible |

Applications

| Storm water | Aquaculture | Dewatering
| Agriculture

MULTISTAGE MULTIOULET CENTRIFUGAL PUMP

HMDO SERIES



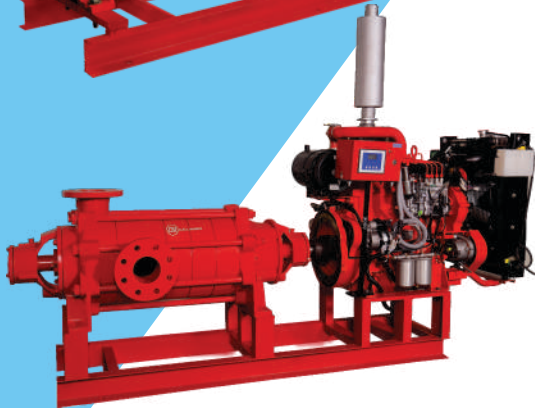
Specifications

| | |
|------------------|-------------------------|
| Max. Flow | : 273 m ³ /h |
| Max. Head | : 300 m |
| Max. Power | : 263 kW |
| Speed in rpm | : 1450 / 2900 |
| Max. Outlet Size | : 200 mm |
| No. of Outlets | : 1, 2, 3 |

Applications

Fire Fighting

| Hydrant | Sprinkler | Jockey



VERTICAL TURBINE PUMPS

VT SERIES



Specifications

| | |
|-------------|-----------------------------|
| Max. Flow | : 50000 m ³ /h |
| Max. Head | : 350 m |
| Lubrication | : Oil / Water/ Forced Water |
| Drive Shaft | : Solid / Hallow |

Applications

| Water Supply | Lift Irrigation | Cooling Tower
 | Thermal Power Plant | Oil Refineries | Desalination
 | Deep Well Pumping | Condensate Extraction | Fire Fighting
 | Flood Control | Dry Docks



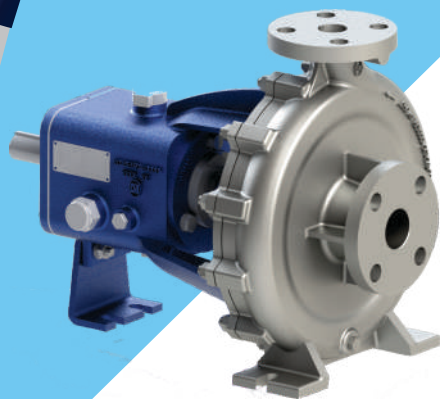
END SUCTION CENTRIFUGAL CHEMICAL PUMPS**ECC SERIES - ANSI B73.1****Specifications**

| | | |
|------------------|---|-----------------------|
| Max. Flow | : | 720 m ³ /h |
| Max. Head | : | 110 m |
| Max. Power | : | 150 kW |
| Max. Pressure | : | 16 bar |
| Max. Liquid Temp | : | 260° C* |
| Speed in rpm | : | 950 / 1480 / 2900 |
| Max. Solid Size | : | 50 mm |

*Confirm with manufacturer before ordering

Applications

| Handling Organic & Inorganic liquids | Chemical & Process Transfer | General Refinery Services | Erosive | Corrosive liquids | Demineralised water | Condensates | Distillation Plant liquids | Liquors

INDUSTRIAL PROCESS PUMPS**IL SERIES****Specifications**

| | | |
|------------------|---|----------------------|
| Max. Flow | : | 23 m ³ /h |
| Max. Head | : | 64 m |
| Max. Power | : | 7.5 kW |
| Max. Pressure | : | 10 bar |
| Max. Liquid Temp | : | 120° C |
| Speed in rpm | : | 1450 / 2900 |
| Max. Outlet Size | : | 32 mm |

Applications

| Chemical & Textile Industries | Dying & Paint Industries | Edible Oil Refinery | Distilleries Plant | Pharmaceuticals | Effluent Treatment | Chemical Dosing | Food Processing, Beverage and Dairy Industries | Evaporation Process

END SUCTION CENTRIFUGAL PROCESS PUMPS**ECP SERIES****Specifications**

| | | |
|------------------|---|------------------------|
| Max. Flow | : | 2500 m ³ /h |
| Max. Head | : | 100 m |
| Max. Power | : | 315 kW |
| Max. Pressure | : | 16 bar |
| Max. Liquid Temp | : | 140° C* |
| Speed in rpm | : | 960 / 1450 |
| Max. Solid Size | : | 95 mm |
| Max. Outlet size | : | 350 mm |

*Confirm with manufacturer before ordering

Applications

| Handles Paper & Pulp stock | Food & beverage industry | De-watering & De-inking liquors | Corrosive & Non-corrosive liquors | Chemical/Process Effluents | Sugar Industries | Power generation & Steel | Brewing & bottling plant liquors

OPENWELL SUBMERSIBLE PUMPS

CSM / CV SERIES



Specifications

| | |
|------------|-------------------------|
| Max. Flow | : 194 m ³ /h |
| Max. Head | : 341 m |
| Max. Power | : 37 kW |

Applications

| Agriculture | Domestic | Irrigation | Gardens | Industrial
| Rural Water Supply

6" BOREWELL SUBMERSIBLE PUMPS

6" BOREWELL



Specifications

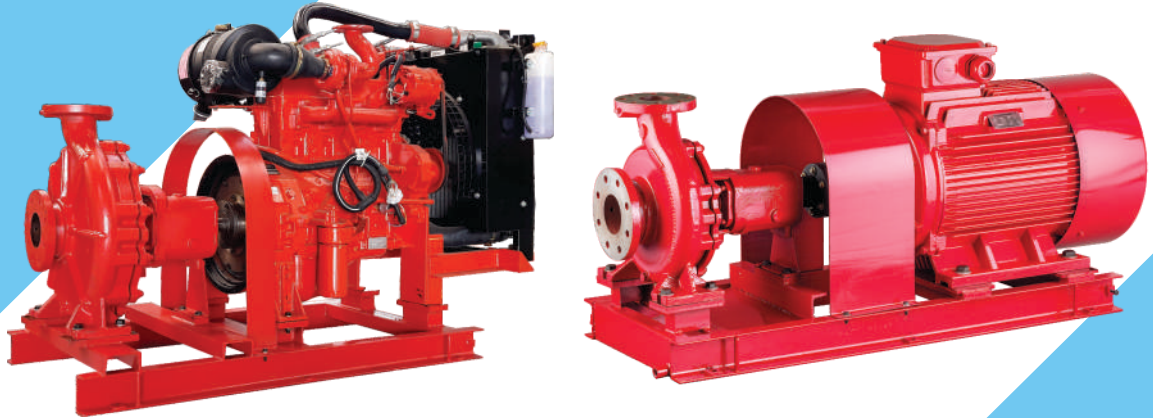
| | |
|----------------|--------------------------|
| Max. Flow | : 79.2 m ³ /h |
| Max. Head | : 516 m |
| Max. Power | : 67.3 kW |
| Max. Outer Dia | : 147 mm |

Applications

| Agriculture | Irrigation | Domestic | Gardens
| Civil & Industrial water supply | Rural Water Supply | Ponds
| Fire Fighting | Pressure boosting

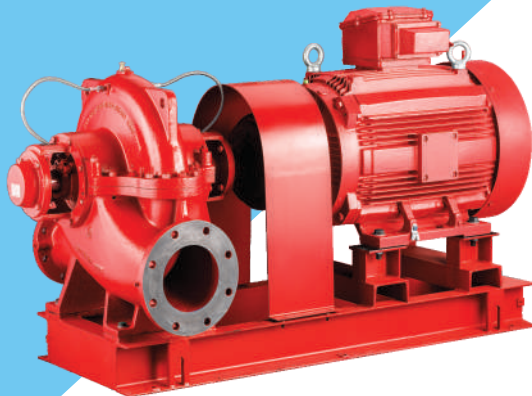
FIRE FIGHTING SYSTEMS

END SUCTION CENTRIFUGAL PUMPSET



HORIZONTAL SPLIT CASE PUMPSET

**VERTICAL MULTISTAGE
INLINE PUMPS (JOCKEY)**



HVAC SOLUTIONS



W I N N I N G W A Y S

When you have a good thing going it is quite in the fitting of things that recognitions come our way. Several prestigious awards, which decorate our shelf, say it all. These rewards not only acknowledge our position as a leader in the water pump industry but also serve as reminders about what the customer expects from a winner. And we, as ever, have our ears perfectly tuned to customer expectations.



C.R.I. PUMPS PRIVATE LIMITED

Regd. Office: 7/46-1, Keeranatham Road, Saravanampatti, Coimbatore - 641 035. Tamilnadu, INDIA.
Phone : +91-422-7117000 Fax : +91-422-7117005, E-mail : bcsmt@cripumps.com • www.crigroups.com
Toll Free 1800 121 1243