



C.R.I. PUMPS

Pumping trust... Worldwide.

NEXT GEN
PRODUCTS

**Smart Pump for
Smart People**



Pressure Booster System | i-Smart Pump | Wastewater Pumps
Swimming Pool Pumps

NEXTGEN PRODUCTS | PERFORMANCE CATALOGUE



Vision, Mission and Values

To be the industry leader providing best-in-class fluid management solutions to individual and institutional customers and societies in our chosen markets.

We will achieve this through our dedicated efforts to enhance the welfare of all our stakeholders and by living by our values of **Commitment, Reliability and Innovation.**



ABOUT C.R.I.

C.R.I. ranks high among the world's fastest-growing fluid management solutions provider with a wide global presence. C.R.I. offers Pumps, Motors, IoT Driven Pumps, IoT Drives & Controllers, Pipes, Wires & Cables, Solar Pumps and Controllers to meet the pumping needs of its wide customer base.



60+ Years
of Engineering
Expertise



120+ Countries
have our strong
global presence



21+
Manufacturing Units
around the World



30000+ Outlets
to serve our
Customers



9000+
Products for various
applications



1500+
Service Centres to
support our Customers



18 Times
EEPC Award Winner
for Export Excellence



8 Times
NEC Award Winner
for Energy Savings



**Fludyn Advanced
Technology Centre**

Recognized by Ministry of
Science & Technology, Govt. of India.

NEXT GEN PRODUCTS

C.R.I. offers a wide range of Next Gen products for Special Applications includes Intelligence Smart Mini pumps i-Smart with 5 in 1 Features, Sewage and Drainage Pumps for waste water applications, Pressure Booster for even water pressure at home, Stainless Steel Monoblock pumps are used for Hygiene Water Supply, Circulatory pumps are used to circulate hot / cold water with adequate pressure, Swimming pool pumps are used for water filtration and recycling purposes. These pumps are combo package for customised needs and it is precisely designed for hassle free performance.

- Pressure Booster System - **BRISK, MHBS, TINY FORCE, i-PREZ**
- Automatic Pump Controller - **APC**
- **i-SMART** - Self Priming Monoblock Pumps
- Stainless Steel Centrifugal Monoblock Pumpset - **CTSS / JTS**
- Stainless Steel Self Priming Monoblock Pumpset - **STEELIX MINI**
- Wastewater Pumps - **MS, MP, DL, SL, SLC, CDL, DM-CDDP, SM & SMB**
- Circulatory Pumps
- Swimming Pool Pumps - **VISTA & NOVA**

Pumping trust... Worldwide.



PRESSURE BOOSTER SYSTEM

BRISK / MHBS / TINY FORCE

C.R.I. Pressure Booster system has a complete combo package for water pressure boosting and it is precisely designed for hassle free performance. The complete system developed to preserve constant water pressure in all outlets, whenever pressure drops/attains to the desired level, pump will Start/Stop automatically. Over all compactness of the pressure boosters consumes lesser space and quality assured components were used for high accuracy, so that noise level will be in limit. We could proudly say, C.R.I. Pressure Boosters are "Fit and Forget" products.

The system consists of pump, non-return valve, pressure switch, pressure gauge, Y-Strainer, float switch and pressure tank. As the Y-Strainer included in the system, the entry of foreign particles are avoided and thus the system life is extended.

Applications

- Residential Buildings • Industries • Hotels
- Hospitals • Apartments • Bungalows

Salient Features

- Ensures even pressure at all the water outlets.
- Automatic pump ON & OFF operation based on water consumption.
- In-built thermal overload protector.
- Lesser running cost than the conventional systems.
- Factory tested system and supplied as a package.

Specifications

	BRISK	MHBS	TINY FORCE
Power ranges upto	1 HP	1.5 HP	1.0 HP
Flow upto	3.8 m ³ /hr	8 m ³ /hr	3.1 m ³ /hr
Maximum pressure upto	5 bar	5.5 bar	3.5 bar
Liquid temperature	90°C*	90°C	33°C

* Applicable only for Special Mechanical Seal

Pressure
is PLEASURE



BRISK



MHBS



**TINY
FORCE**

PERFORMANCE CHART

2880 RPM, Single Phase - 220 - 240 Volts 50Hz, A.C. Supply. with 24 litres tank

Approx. Recommendation

Model	Power		Head in Metre	Flow (m³/hr)									Suction Size (mm)	Delivery Size (mm)	BHK	No of Bath rooms	No of Taps	
	kW	HP		0	0.8	1.5	2	2.4	2.8	3.2	3.5	3.7						3.8
BRISK-2E/03	0.37	0.5		30	27	23	21	18	15	11				25	25	1	1	3
BRISK-2E/04	0.55	0.75		40	37	33	29	25	20	16	13	9		25	25	1	2	6
BRISK-2E/05	0.75	1		50	46	42	37	33	28	23	19	14	9	25	25	2	3	9
BRISK-2E/06	1.1	1.5		62	58	51	46	41	34	27	21	15	10	25	25	3	4	12

* BRISK models are available with Float Switch and Non Float Switch.

Model	Power		Head in Metre	Flow (m³/hr)						Suction Size (mm)	Delivery Size (mm)	BHK	No of Bath rooms	No of Taps	
	kW	HP		0	1.0	1.5	2.0	2.5	3.0						3.5
MHBS-2E/03	0.30	0.40		27	24	23	21	18.5	16	12.5	25	25	1	1	3
MHBS-2E/04	0.37	0.50		37	33	32	29	26	22	17.5	25	25	1	2	6
MHBS-2E/05	0.45	0.60		47	43	40	37	33	27.5	21.5	25	25	2	3	9
MHBS-2E/06	0.55	0.75		55	50	47.5	43.5	38.5	32.5	26.5	25	25	3	4	12

Model	Power		Head in Metre	Flow (m³/hr)							Suction Size (mm)	Delivery Size (mm)	BHK	No of Bath rooms	No of Taps	
	kW	HP		0	2	3	4	5	6	7						8
MHBS-5/04	0.55	0.75		35	31	28.5	26	23	18	16	12	25	25	3	4	12
MHBS-5/05 *	0.75	1.0		45	40	38	34	31	24	22	15	25	25	3	4 - 5	15
MHBS-5/06 *	1.1	1.5		54	49.5	47	43	38	30	22	20	25	25	4	5 - 6	18

* Marked models available in 35 ltr tank also

PERFORMANCE CHART

2880 RPM, Single Phase - 220 - 240 Volts 50Hz, A.C. Supply. with 2 litres tank

Approx. Recommendation

Model	Power		Head in Metre	Flow (m³/hr)														Suction Size (mm)	Delivery Size (mm)	BHK	No of Bath rooms	No of Taps
	kW	HP		0.4	0.7	0.8	0.9	1.1	1.3	1.4	1.5	1.6	1.7	1.9	2.0	2.1	2.2					
TINY FORCE 50	0.37	0.5			25		21	18	15		12		10	8		6		25	25	1	1	3
TINY FORCE 51	0.37	0.5		30		25		21		18		15		12	10	8	6	25	25	1	1	3

Model	Power		Head in Metre	Flow (m³/hr)										Suction Size (mm)	Delivery Size (mm)	BHK	No of Bath rooms	No of Taps
	kW	HP		0.9	1.3	1.6	1.9	2.2	2.3	2.5	2.7	2.9	3.1					
TINY FORCE 100	0.75	1.0		35	30	25	21	18	15	12	10	8	6	25	25	1	1	3

MATERIAL OF CONSTRUCTION - PUMPSET

Part Name	Material
Pump Shell	SS 304
Suction & Discharge Chamber	Cast Iron
Rotor	Aluminium Die Cast
Motor Body	Aluminium Extruded
Motor Shaft	SS 410
Impeller	SS / High Tensile Brass / Noryl
Mechanical Seal	Silicon vs Carbon vs EPDM / Ceramic vs Carbon vs NBR

PRESSURE BOOSTER SYSTEM

i-PREZ

C.R.I. i-Prez Series are basically domestic pressure boosting system with built-in Variable speed for constant pressure in pipe line. The pressure transducer in this system monitors pressure at any time. i-Prez also protects the system from dry run, over loading, unbalanced voltages and short circuit. The system comprises of Horizontal Multistage Pump, VSD, 5 Way connector with built in NRV, pressure tank, Pressure gauge & pressure transducer.

Salient Features

- Plug & play type.
- Soft start increases smooth functioning and better life to the pumpset.
- Protects the pumpset from High voltage, low voltage, dry run, overload, underload.
- Wide LCD Display for Easy Operation.
- Fully Stainless steel 5 way connector with Built in NRV.
- Pressure Transducer 9 Bar Capacity.
- Fully Stainless Steel Wet Parts for Hygiene and Durability.

Specifications

Power ranges	0.75 kW - 2.2 kW (1 HP - 3 HP)
Input Voltage	1 Ph - 220 V
Frequency	50 Hz
VFD Output	3 Ph - 220 V
Head Range	up to 11m ³ /hr
Flow Range	up to 68 Mtr
Liquid Temperature	up to 70°C
Ambient Temperature	up to 40°C
Pressure Transmitter	24V, 4-20 mA
Pressure Setting Range	up to 9 Bar

Applications

- Residential Buildings • Industries • Hotels
- Hospitals • Apartments • Bungalows



iPrez

PERFORMANCE CHART

2880 RPM, Single Phase - 220 - 240 Volts 50Hz, A.C. Supply.

Model	kW	HP	RPM	m ³ /hr	0	0.5	1	1.5	2	2.5	3	3.5	4	4.5
				lps	0	0.14	0.28	0.42	0.56	0.69	0.83	0.97	1.11	1.25
i-Prez 07	0.75	1	2900	Head in Metre	55.5	53	49.5	46.5	43	39.5	35.5	31	25	17
			2620		45	42.5	39.5	37	33.5	30.5	26.5	21.5	14.5	
			2320		35.5	33	30.5	28	25.5	22	18	12.5		
			1740		20	18	16	14	11.5	8				

Model	kW	HP	RPM	m ³ /hr	0	0.5	1	1.5	2	2.5	3	3.5	4	4.5	5	5.5	6	6.5	7	7.5
				lps	0	0.14	0.28	0.42	0.56	0.69	0.83	0.97	1.11	1.25	1.39	1.53	1.67	1.81	1.94	2.08
i-Prez 11	1.1	1.5	2900	Head in Metre	54.5	52.5	51	49	47.5	45.5	44	42	40	37.5	35	32	28.5	24	18	9.5
			2620		44	42.5	41	39.5	38	36.5	35	33	31	28	24.95	20.5	15.5	10		
			2320		35	33.5	32.5	31	29.5	28	26.5	24.5	22	19	16	12				
			1740		19.5	18.5	17.5	16	15.5	14.5	13	12	10	6.5						

Model	kW	HP	RPM	m ³ /hr	0	0.5	1	1.5	2	2.5	3	3.5	4	4.5	5	5.5	6	6.5	7	7.5
				lps	0	0.14	0.28	0.42	0.56	0.69	0.83	0.97	1.11	1.25	1.39	1.53	1.67	1.81	1.94	2.08
i-Prez 15	1.5	2	2900	Head in Metre	52.5	51.5	50	49	47.5	46	44.5	43	41	38.5	35.5	32.5	28.65	24	18	12
			2620		42.5	41.5	40.5	39	38	36.5	35	33.5	31.5	29	26	22	18	12.5		
			2320		34.5	33	32	30.5	29.5	28	26.5	24.5	22.5	20	16.5	12				
			1740		18.5	18	17	16.5	15.5	14.5	13	10.5	7.5							

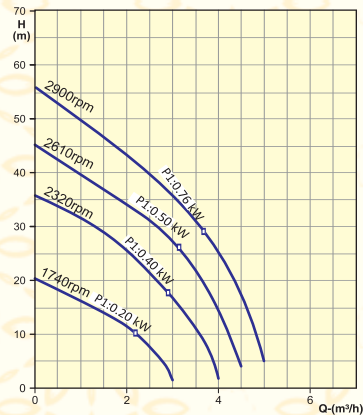
PERFORMANCE CHART

2880 RPM, Single Phase - 220 - 240 Volts 50Hz, A.C. Supply.

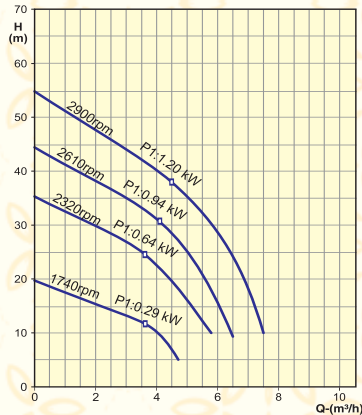
Model	kW	HP	RPM	m³/hr	0	0.5	1	1.5	2	2.5	3	3.5	4	4.5	5	5.5	6	6.5	7	7.5	8	8.5	9	9.5	10	10.5
					0	0.14	0.28	0.42	0.56	0.69	0.83	0.97	1.11	1.25	1.39	1.53	1.67	1.81	1.94	2.08	2.22	2.36	2.50	2.64	2.78	2.92
i-Prez 22	2.2	3	2900	Head in Metre	68	66	64.5	63	61	60	58	56.5	55	53.5	52	50	48	46	44	42	39.5	37	34.5	32	30	27.5
			2620		55	53.5	52	50.5	49	47.5	46.5	45	43.5	42	40	38.5	37	35	33	30.5	28.5	26	24	22		
			2320		43.5	42	40.5	39.5	38	37	35.5	34.5	33	31.5	30	28.5	27	25	23	21	19	17				
			1740		24.5	23.5	22.5	21.5	20.5	19.5	18.5	17.5	16.5	15	13.5	12	10.5	9								

Performance Curve

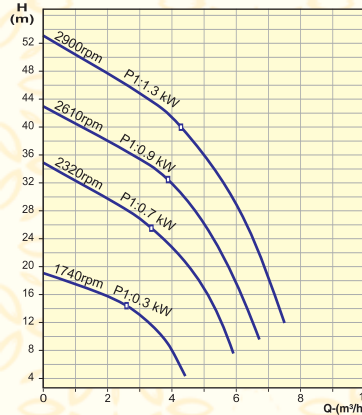
i Prez - 07



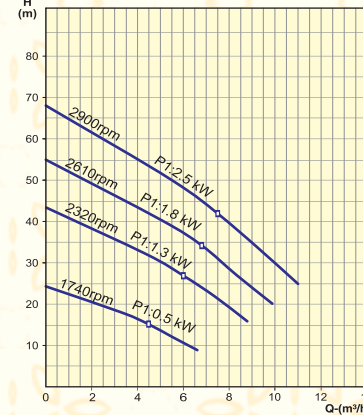
i Prez - 11



i Prez - 15



i Prez - 22



AUTOMATIC PUMP CONTROLLER - APC

CPH - 15

Automatic Pump controller unit uniquely designed to manage constant pressure and water flow throughout the system. It STARTS the pump automatically when tap is opened and STOP the pump automatically when tap is closed, so it makes the entire system effective and efficient.

To protect pump from back flow of water in build check valve is used and for dry run protection, Sensor based integrated electronics unit is used.



Applications

- House Watering Systems • Car Washing • Gardens • Fountains.

Salient Features

- Maintain even water pressure at all outlets.
- Automatic ON & OFF operation of the pump.
- Specially designed for space constraint area.
- Dry run protection.

Specifications

Version	1Ph, 220 - 240V, A.C. Supply, 50Hz
Maximum Current	10 A
Maximum Working Pressure	10 Bar
Cut In Pressure	1.5 Bar
Cut Off Pressure	4 Bar
Degree of Protection	IP65
Max Working Temperature	33° C



SELF PRIMING MONOBLOCK PUMPS WITH MOBILE APP

i-SMART

CRI's new i-smart pumps are enabled with Wi-Fi connect provision for pump operation & protection. Through Wi-Fi connect, pump can be operated, and real time updates can be monitored.

i-Smart Mobile Application featured with Pump ON/OFF, Timer setting, pump protection from Dry run, Low Voltage and High voltage faults and it is entitled with Float switch which automatically runs the pump based on water utilisation and it will indicate once water is filled in the overhead tank.

Applications

- Household water applications • Small Garden • Civil application • Pressure boosting system.

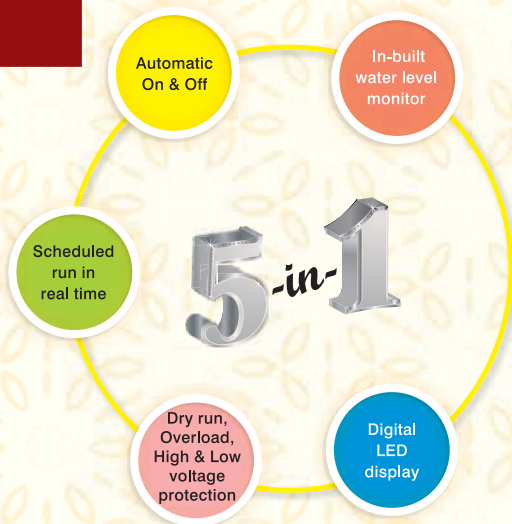
Specifications

Power Range	0.37kW (0.5HP) & 0.75kW (1HP)
Maximum Head	30 Metre
Maximum Flow	3050 LPH
Version	Single Phase 220 V, AC Supply
Pipe Size (S x D)	25 x 25 mm



C.R.I. i-Smart
Mobile App

2880 RPM, Single Phase - 220 Volts, 50 Hz, A.C. Supply



PERFORMANCE CHART

Model	kW	HP	Type	Suction x Delivery in mm	Suction Capacity in Mtrs	Total Head in Mtr / Feet								
						6	8	10	12	15	18	21	25	30
						20	26	33	39	49	59	69	82	98
						Discharge in LPH								
ISSP 50 / ISWSP 50	0.37	0.5	Self Priming	25x25	8	2088	2000	1800	1600	1400	1220	1000	760	
ISSP 100 / ISWSP 100	0.75	1	Self Priming	25x25	8	3050	2850	2650	2500	2350	2120	1900	1800	1400

ISWSP 50 and ISWSP 100 Models are available with Mobile App.



STAINLESS STEEL CENTRIFUGAL MONOBLOCK PUMPSET

CTSS / JTS

C.R.I. S.S. Centrifugal Monoblock / Self-Priming Jet pumps are carefully designed to give best hydraulic efficiency and suction lift characteristics. Most modern and highly sophisticated machinery and technology are employed in the manufacture of these pumps, using quality raw material, seals and ball bearings to ensure long life. Dynamically balanced rotor ensures vibration free and noise free operation. All single phase pumps are in-built with thermal overload protector to prevent overload. High operating efficiency of these pumps result in low power consumption.

Applications

- Domestic • Gardening • Car washing • Drinking water supply
- Food Processing • Industrial Water System • Shallow wells.

Salient Features

- In-built thermal overload protector
- Hygienic pumping system
- Backpull-out design for easy servicing and repair

Specifications

	CTSS	JTS
Power range	0.37 kW - 1.8 kW (0.5 HP - 2.5 HP)	0.37 kW - 1.1 kW (0.5 HP - 1.5 HP)
Maximum head	31 metre	45 metre
Maximum flow rate	12 m ³ /hr	3.75 m ³ /hr
Versions	1Ph - 220V / 3Ph - 380-415V, 50Hz, AC	1Ph - 220V / 3Ph - 380-415V, 50Hz, AC
Maximum suction lift	8 m	8 m



CTSS



JTS

PERFORMANCE CHART

2880 RPM, Single Phase - 220 Volts, Three Phase - 380-415 Volts 50 Hz, A.C. Supply

PUMP MODEL		MOTOR POWER		NOMINAL PUMP SIZE IN MM (Suction x Delivery)	DISCHARGE IN LPS / M³/Hr											
					0	0.27	0.55	0.83	1.1	1.3	1.6	1.9	2.2	2.5	2.9	3.3
1Ø	3Ø	kW	HP		0	1	2	3	4	5	6	7	8	9	10	12
					TOTAL HEAD IN METRES											
CTSS-5/03M	CTSS-5/03T	0.37	0.5	32 x 25	16	15.5	15	14.5	13	11.5	10.5	9				
CTSS-6/05M	CTSS-6/05T	0.55	0.75	32 x 25	19.5	18	17	15.5	13.5	12.5	11	8				
CTSS-8/07M	CTSS-8/07T	0.75	1.0	32 x 25	23	22	21.5	20.5	19.5	18	17	16	14.5	13		
CTSS-7/10M	CTSS-7/10T	1.0	1.3	32 x 25	29	28	26.5	25.5	24	22.5	20.5	18.5	15.5	11.5		
CTSS-8/11M	CTSS-8/11T	1.1	1.5	32 x 25	26.5	26	25.5	25	24.5	23.5	22	20.5	19.5	18	17	
CTSS-8/15M	CTSS-8/15T	1.5	2.0	32 x 25	31	30	29	28.5	27.5	27	26	25	24.5	23	22	20.5
CTSS-10/18M	CTSS-10/18T	1.8	2.5	32 x 25	30	29.5	29	28.5	28	27.5	27	26	25	24	23	21

PUMP MODEL		MOTOR POWER		NOMINAL PUMP SIZE IN MM (Suction x Delivery)	DISCHARGE IN LPS / M³/Hr								
					0	0.1	0.3	0.4	0.6	0.7	0.8	1.0	1.04
1Ø	3Ø	kW	HP		0	0.5	1	1.5	2	2.5	3	3.5	3.75
					TOTAL HEAD IN METRES								
JTS-2/03M JTS-2/03MA	JTS-2/03T	0.37	0.5	25 x 25	36	31	26.5	21.5	17	11	7	-	-
JTS-3/05M	JTS-3/05T	0.55	0.75	25 x 25	38	34	31.5	28.5	26.5	23	18.5	12.5	10
JTS-3/07M JTS-3/07MA	JTS-3/07T	0.75	1.0	25 x 25	40	37	34	32	29	26.5	23	7	10
JTS-3/11M	JTS-3/11T	1.1	1.5	25 x 25	45	42	38.5	36	32.5	29.5	26.5	19.5	10

JTS-2/03MA & JTS-3/07MA model are available with copper coated winding.

STAINLESS STEEL SELF PRIMING MONOBLOCK PUMPSET

STEELIX MINI

CRI Mini Stainless Steel Self priming Pumps are designed with fully SS casted pump components which provides longer life and maintains hygiene of fluid's. Most modern and highly sophisticated machinery and technology are employed in the manufacture of these pumps, using quality raw material, seals and ball bearings to ensure long life. Dynamically balanced rotor ensures vibration free and noise free operation. All single phase pumps are in-built with thermal overload protector to prevent overload.

Applications

- Salt water
- Domestic water supply
- Civil Applications

Salient Features

- Corrosive resistant pump parts to ensure longer life.
- Optimized hydraulic design for efficient performance.
- Smooth surface finish results in friction free flow of fluid.
- Best suitable for saline water.

Specifications

STEELIX MINI

Power range	0.5HP (0.37 kW) and 1HP (0.75 kW)
Maximum head	6 to 30 metre
Maximum flow rate	700 LPH to 3000 LPH
Versions	Single Phase 220V, 50Hz, AC supply
Delivery Size	25 x 25 mm



STEELIX
MINI

PERFORMANCE CHART

2800 RPM, Single Phase - 220 Volts, 50 Hz, A.C. Supply

Model	kW	HP	Type	Suction x Delivery in mm	Total Head in Mtr / Feet								
					6	8	10	12	15	18	21	25	30
					20	26	33	39	49	59	69	82	98
					Discharge in LPH								
STEELIX MINI 50	0.37	0.5	Self Priming	25x25	1900	1800	1600	1500	1300	1105	1020	700	
STEELIX MINI 100	0.75	1	Self Priming	25x25	3000	2840	2700	2600	2400	2200	2000	1760	1300

MATERIAL OF CONSTRUCTION

Part Name	Material
Motor Body	Aluminium Extruded
Rotor	Aluminium Die Cast
Pump Casing	SS
Impeller	High Tensile Brass
Mechanical Seal	Carbon vs Ceramic

WASTEWATER SUBMERSIBLE PUMPS

MS, MP, DL, SL, SLC, CDL, DM-CDDP & SM

C.R.I. has introduced highly efficient and reliable sewage & drainage pumps in a comprehensive range. These pumps are available with different materials of construction and feature a multitude of applications in waste water handling and treatment.

All C.R.I. sewage & drainage pumps are perfectly powered by motor designed to deliver optimal performance and to withstand weather and power fluctuation.

Applications

- Draining sewage water from hotels, houses, commercial buildings, complexes etc.,
- Pumping waste water in industries
- Pumping municipal sewage water
- Septic tanks.

Salient Features

- Non clogging impellers ensures free flow of solids
- Cutter design yields fine solids for non clogging operation
- Corrosion resistant Stainless Steel 304 Grade Pump portion ensures longer life
- Plastic & SS body with Heavy Construction and Shock Proof
- Motor is designed with Self Cooling Effect
- Epoxy Potted water proof cables
- Prevention from dry run
- Efficient pumps with more energy savings
- Automatic ON/OFF operation, enabled by adjustable float switch



MS



MP



DL



SL-2V



SL - 2D / SLC



CDL



DM - CDDP



SM - 1E

Model Identification Code

MS & MP - Series

M X - X XXX

Mini Waste Water

MOC
P - Plastic
S - SS

Power in Watts
550 - 550W
750 - 750W

Type
D - Drainage
S - Sewage
T - Drainage / Sewage

DL, SL, SLC, Series

X X X -X X -XX X X X

D - DRAINAGE
S - SEWAGE

TYPE
L - Light

S - Stainless Steel
C - Cutter

M.O.C

X	PUMP CASING	IMPELLER	MOTOR HOUSING
2	C.I	CI	SS 304
5	SS 304	SS 304	SS 304
8	C.I	Thermo plastic	SS 304

IMPELLER TYPE

V - Vortex

M - Open / Semi Open Multi Channel

D - Open / Semi Open Double Channel

E - Closed Double Channel L - Closed Multi Channel

R - Adaptor
A - With Float Switch

Phase / Connection /
control box / Frequency
S - 1 Ph - CSR - 50
T - 3 Ph - D.O.L - 50

Outlet size (mm)
C - 40 D - 50
E - 65 F - 80

POWER (kW)
03 - 0.37 07 - 0.75
11 - 1.1 15 - 1.5
18 - 1.8

Specifications

	MS & MP Series	DL - Series	SL - Series	SLC - Series
Power Range	0.5 - 0.75 kW (0.75 - 1 HP)	0.5 - 1.5 kW (0.75 - 2 HP)	0.5 - 2.2 kW (0.75 - 3 HP)	1.1 & 1.8 kW (1.5 & 2.4 HP)
Speed	2880 rpm			
Version	Single Phase 230V; Three Phase 380 - 415V; 50Hz A.C. Supply			
Degree of Protection	IP 68			
Insulation Class	E / B / H / F			
Motor Type	Dry - type			
Max. Immersion Depth	5m			
Sealing	Mechanical Seal			
Impeller Type	Closed Multi Channel	Closed Multi Channel Semi Open Double Channel	Vortex	Vortex Semi Open Double Channel
Max. Ambient Temp.	40°C			
Delivery Size (mm)	32 & 40mm	32 & 50mm	40, 50 & 65mm	50 & 80mm
Solid handling capacity	Up to 25mm	-	Up to 55mm	-
Max. Head	8.2 metre	20 metre	18 metre	12 metre
Max. Flow	10 m³/hr	25.2 m³/hr	43.2 m³/hr	20 m³/hr

Specifications

	CDL - Series	SM - Series	DM-CDDP - Series
Power Range	0.4 & 0.75 kW (0.55 & 1HP)	1.5 - 5.5 kW (2 - 7.5 HP)	0.75 - 7.5 kW (1 - 10 HP)
Speed	2880 rpm		
Version	Single Phase 230V; Three Phase 380 - 415V; 50Hz A.C. Supply		
Degree of Protection	IP 68		
Insulation Class	E / B / H / F		
Motor Type	Dry - type		
Max. Immersion Depth	5m		
Sealing	Double Mechanical Seal		
Impeller Type	Vortex	Closed Double Channel	Vortex
Max. Ambient Temp.	40°C		
Delivery Size (mm)	50 & 80mm	50 & 80mm	40, 50, 80 & 100mm
Solid handling capacity	6mm	up to 30mm	up to 12mm
Max. Head	18 metre	32 metre	30 metre
Max. Flow	18 m ³ /hr	60 m ³ /hr	105 m ³ /hr

Impeller Type

					
Vortex	Semi open single channel	Semi open double channel	Semi open multi channel	Closed double channel	Closed multi channel

PERFORMANCE CHART

2880 RPM, Single Phase - 220 Volts, Three Phase - 380-415 Volts 50 Hz, A.C. Supply

Model	kW	HP	Outlet size (mm)	m ³ /hr	0	1	2	3	4	5	6	7	8	9	10	Solid Handling Capacity in mm
MS-S550	0.55	0.75	40	Head in Metre	7	6.8	6.5	6.2	5.8	5	5.5	5.2	4.5	4		25
MS-S750	0.75	1	40		8	7.6	7.5	7	6.8	6.2	5.8	5.4	4.3	4	3.3	25
MS-D750	0.75	1	32		8.2	7.8	7.5	7	6.2	5.8	5	4.5	3.8	2.5		-
MP-T550	0.55	0.75	40		7	6.8	6.6	6.4	6	5.8	5.6	5.2	4.5	4		25
MP-T750	0.75	1	40		8	7.8	7.6	7.4	7	6.5	6	5.5	5	4	2.7	25

Model	kW	HP	Outlet size (mm)	m ³ /hr	0	2.5	5	7.5	9.4	10	12.5	13.8
DL-8L-07DS	0.75	1	50	Head in Metre	20	19.5	19.2	18.5	17.5	16	14.5	12.8

Model	kW	HP	Outlet size (mm)	m ³ /hr	0	2.5	5	7.5	10	12.5	15	17.5	18.75	20	22.5
DL-2L-15DT	1.5	2	50	Head in Metre	20	19.5	19.2	19	18.8	18.5	18	17	16	15.5	14

Model	kW	HP	Outlet size (mm)	m ³ /hr	0	3.6	7.2	10.8
DL-2V-05BS-A	0.55	0.75	32	Head in Metre	11	10.6	9.7	7.9
DL-2V-05BT	0.55	0.75	32		11	10.6	9.7	7.9

"A" - are available with Float Switch.

PERFORMANCE CHART

2880 RPM, Single Phase - 220 Volts, Three Phase - 380-415 Volts 50 Hz, A.C. Supply

Model	kW	HP	Outlet size (mm)	m³/hr	0	3.6	7.2	10.8	14.4	18	21.6	25.2
DL-2V-07DS-A	0.75	1	50	Head in Metre	10	9.4	8.7	7.8	6.8	5.9		
DL-2V-07DS	0.75	1	50		10	9.4	8.7	7.8	6.8	5.9		
DL-2V-07DT	0.75	1	50		10	9.4	8.7	7.8	6.8	5.9		
DL-2V-11DS-A	1.1	1.5	50		11	10.8	10.5	10.4	9	8.2	6.8	
DL-2V-11DT	1.1	1.5	50		11	10.8	10.5	10.4	9	8.2	6.8	
DL-2V-15DS-A	1.5	2	50		14	13.7	13.3	12.7	11.9	11.1	10.1	9
DL-2V-15DT	1.5	2	50		14	13.7	13.3	12.7	11.9	11.1	10.1	9

Model	kW	HP	Outlet size (mm)	m³/hr	0	2.5	5	7.5	10	12.5	15	Solid Handling Capacity in mm
SL-2D-07CS	0.75	1	40	Head in Metre	18	17.5	16.5	15	14.5	13	12.5	25
SL-2D-07DS	0.75	1	50		14	13.5	12.8	11.3	11	9.5	8	35

Model	kW	HP	Outlet size (mm)	m³/hr	0	3.6	7.2	10.8	14.4	18	21.6	25.2	28.8	Solid Handling Capacity in mm
SL-2V-05CS-A	0.55	0.75	40	Head in Metre	7.2	6.3	5.3	4.4						39
SL-2V-05CT	0.55	0.75	40		7.2	6.3	5.3	4.4						39
SL-2V-07CS-A	0.75	1	40		12.1	9.9	8.4	7.3						39
SL-2V-07CT	0.75	1	40		12.1	9.9	8.4	7.3						39
SL-2V-07DS-R	0.75	1	50		12.1	9.9	8.4	7.3						39
SL-2V-07DS-AR	0.75	1	50		12.1	9.9	8.4	7.3						39
SL-2V-07DS-A	0.75	1	50		13.3	12.2	10.8	9.3	7.9	6.2				44
SL-2V-07DT	0.75	1	50		13.3	12.2	10.8	9.3	7.9	6.2				44
SL-2V-07DT-R	0.75	1	50		12.1	9.9	8.4	7.3						39
SL-2V-15DS-A	1.5	2	50		15.1	13.6	12.1	10.5	9	7.4	6			44
SL-2V-15DT	1.5	2	50		18.1	17	15.6	14	12.2	10.2	8.2	6.3	4.5	44

"A" - are available with Float Switch.

PERFORMANCE CHART

2880 RPM, Single Phase - 220 Volts, Three Phase - 380-415 Volts 50 Hz, A.C. Supply

Model	kW	HP	Outlet size (mm)	m³/hr	0	7.2	14.4	21.6	28.8	36	43.2	Solid Handling Capacity in mm
SL-2V-11DS-A	1.1	1.5	50	Head in Metre	14.2	13.4	10.2	7.6				44
SL-2V-11DT	1.1	1.5	50		14.5	13	10.6	8.1	5.5	3		44
SL-2V-22DT	2.2	3	50		18	16	13.8	11.5	9	6.5	3.5	44
SL-2V-11ES-A	1.1	1.5	65		10.2	9.5	8.6	7.3	5.6			55
SL-2V-11ET	1.1	1.5	65		10.2	9.5	8.6	7.3	5.6			55
SL-2V-22ET	2.2	3	65		17	15.4	13.6	11.8	9.4	6.9	4.6	55

Model	kW	HP	Outlet size (mm)	m³/hr	0	4	8	12	13	16	20
SLC-2V-11DS/DT	1.1	1.5	50	Head in Metre	8	7	6.5	5.5	4.8	3.5	
SLC-2D-18FS/FT	1.8	2.4	80		12	9.5	8.5	7.5	7	6.5	5

Model	kW	HP	Outlet size (mm)	m³/hr	0	2	4	6	8	10	12	14	16	18	Solid Handling Capacity in mm
CDL-55	0.4	0.55	50	Head in Metre	12	11	10	9	7	5	2	1			6
CDL-100	0.75	1.0	50		18	17	16	15	13	11	9	6	2		6
CDL-150	0.75	1.0	80		17	16	15	14	13	12	10	7	5	2	6

*"A" - are available with Float Switch.

PERFORMANCE CHART

2880 RPM, Single Phase - 220 Volts, Three Phase - 380-415 Volts 50 Hz, A.C. Supply

Model	kW	HP	Outlet size (mm)	m³/hr	0	6	7.2	10.5	16.5	19.5	21	24	Solid Handling Capacity in mm
DM-2M-07CS	0.75	1	40	Head in Metre	12		10		8		5		3
DM-2M-15DS	1.2	2	50	Head in Metre	16	14		12	10	8		5	5

Model	kW	HP	Outlet size (mm)	m³/hr	0	15	18	27	33	36	42	48	Solid Handling Capacity in mm
DM-2M-22FT	2.2	3	80	Head in Metre	20	17	16	14	12	10	8	5	8

Model	kW	HP	Outlet size (mm)	m³/hr	0	3	12	18	30	33	39	45	54	57	66	Solid Handling Capacity in mm
DM-2M-37GT	3.7	5	100	Head in Metre	25	24	22	20	17	16	14	12	10	8	5	8

Model	kW	HP	Outlet size (mm)	m³/hr	0	12	15	21	30	39	45	51	54	60	69	84	Solid Handling Capacity in mm
DM-2M-55GT	5.5	7.5	100	Head in Metre	27	25	24	22	20	17	16	14	12	10	8	5	12

Model	kW	HP	Outlet size (mm)	m³/hr	0	6	12	24	27	36	45	63	69	78	84	90	96	105	Solid Handling Capacity in mm
DM-2M-75GT	7.5	10	100	Head in Metre	30	28	27	25	24	22	20	17	16	14	12	10	8	5	12

PERFORMANCE CHART

2880 RPM, Single Phase - 220 Volts, Three Phase - 380-415 Volts 50 Hz, A.C. Supply

Model	kW	HP	Outlet size (mm)	m³/hr	0	4	8	12	16	20	24	28	29	Solid Handling Capacity in mm
				lps	0	1.11	2.22	3.33	4.44	5.56	6.67	7.78	8.06	
SM-1E-15DT	1.5	2	50	Head in Metre	19.5	18	17	16	14.5	13	11.5	8.5	7.5	15

Model	kW	HP	Outlet size (mm)	m³/hr	0	4	8	16	20	24	28	32	34	34.5	Solid Handling Capacity in mm
				lps	0	1.11	2.22	4.44	5.56	6.67	7.78	8.89	9.44	9.58	
SM-1E-22DT	2.2	3	50	Head in Metre	24	22.5	21.5	19.5	18	16.5	15	12.5	11.5	11	15

Model	kW	HP	Outlet size (mm)	m³/hr	0	5	10	15	20	25	30	35	40	45	50	55	60	Solid Handling Capacity in mm
				lps	0	1.39	2.78	4.17	5.56	6.94	8.33	9.72	11.11	1.00	13.89	15.28	16.67	
SM-1E-40FT	3.7	5	50	Head in Metre	30.5	29.5	29	28	27	26	24.5	23	20.5	18	15	11	7.5	30
SM-1E-55FT	5.5	7.5	50		32.5	32	31.5	30.5	30	28.5	27.5	25.5	23.5	21.5	18	13.5	8.5	30

SELFPRIMING NON-CLOG MONOBLOCK PUMPS

SMB

C.R.I. "SMB Series" Self-priming non-Clog Monoblock Pump's are especially designed to dewater the sewage and sludges from trenches and pits. It is designed with non-clogging semi open type impellers which is supports for handling suspended solids. These pumps are powered by a totally enclosed fan cooled A.C. induction motor. Motor stator is made of low watt loss silicon steel laminations assembled under pressure and rigidly locked in the frame. Construction of motor frames and usage of quality materials result in high performance and low temperature rise thereby increasing the life cycle of the motor.

Applications :

- Pumping from Septic tanks in all types of Industries.
- Draining sewage / Rain water from hotels, malls & commercial buildings.
- Water recycling plants.
- Pumping waste water in Tunnels & Mines.

Salient Features :

- Non clogging impellers ensures free flow of solids.
- Solid Handling capacity upto 15.5mm.
- Quick automatic Self-priming function-no need for footvalve.
- Back-pull out type for easy maintenance.
- Efficient pumps with more energy savings.



SMB Series

Specifications :

Power range	0.75kW - 3.7kW (1HP - 5HP)
Maximum head	24 meter
Maximum flow rate	1050 lpm
Type of Duty	S1 (Continuous)
Versions	1Ph 200-240V / 3Ph 380-415V, 50Hz, A.C. Supply
Sealing	SMB 140 Mechanical seal arrangement, SMB 240,350 & 580 Stuffing box arrangement

PERFORMANCE CHART

PUMP MODEL	MOTOR POWER			NOMINAL PUMP SIZE IN MM (Suction x Delivery)	TOTAL HEAD IN METRES										
					6	8	10	12	14	16	18	20	22	24	SOLID HANDLING SIZE IN mm
	kW	HP	RPM		19.5	26	33	39	46	52.5	59	65.5	72	78	
	DISCHARGE IN LPM														
SMB-140 / T/SMB-140	0.75	1.0	2880	40 x 40	270	240	198	144	96	-	-	-	-	-	7.0
SMB-240 / T/SMB-240	1.5	2.0	2880	40 x 40	-	-	336	300	246	180	84	-	-	-	8.5
T/SMB-350	2.2	3.0	2880	50 x 50	-	-	510	480	444	390	324	252	168	60	10.5
T/SMB-580	3.7	5.0	1440	80 x 80	-	-	1050	930	750	480	204	-	-	-	15.5

NOTE : Performance applicable to liquid of specific gravity 1.02 and viscosity as of water.

CIRCULATORY PUMPS

C.R.I. Circulatory pumps are used to circulate Hot/cold water with adequate pressure in the pipe line. It is featured with Auto and Manual functions. In Auto Mode, pump will be operated based on water consumption. Whenever the taps are opened, pump will START and delivers the high-pressure water. when Taps are closed, pump will STOP automatically. In Manual mode, pump need to be operated manually. Circulatory pumps are provided with 1.5 Metre lead out cable with plug. So it would be easy for installation

Applications

- Washing Machines, Heater & Shower.
- Boostup house watering system.
- Domestic heating systems.
- Air conditioning.
- Cooling system.

Salient Features

- Designed with Auto and Manual function.
- Silent operation.
- Corrosion free parts for hygiene.
- Easy for installation & service.

Specifications

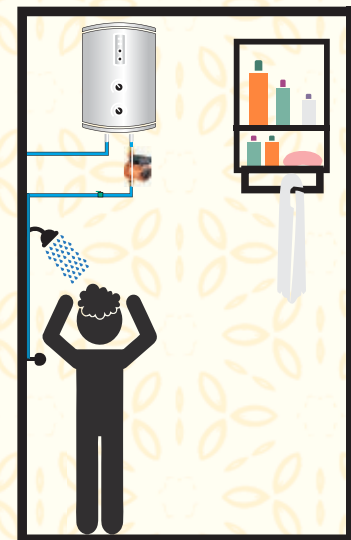
Liquid temp. range	-5°C to +110°C
Max. Operating Pressure	10bar
Voltage	Single phase 230V
Frequency	50 Hz
Degree of protection	IP 44
Insulation Class	F
Mounting position	Horizontal
Max. Head	12 mtrs
Max. Discharge	3.1 m³/hr



PERFORMANCE CHART

2800 RPM, Single Phase - 230 Volts, 50 Hz, A.C. Supply

Pump Model	Power (W)	Max. Head (Mtr)	Max. Flow (m³/hr)	Inlet and Outlet in MM
RS12/9G	120 W	9	1.5	15
RS12/10G	150 W	10	1.8	15
RS20/12Z	275 W	12	3.1	25



SWIMMING POOL PUMPS

VISTA & NOVA

C.R.I. Swimming Pool pumps are designed with inbuilt pre filter basket for cleaning the pool water. The mechanical seals are made of graphite and alumina with close tolerance for perfect sealing systems and the dynamically balanced rotary parts ensure vibration and noise free operation. All the parts of both pumps and motors are made of high quality materials to enhance the life span and efficiency. All single phase pumps are equipped with thermal overload protector to protect the motor from adverse operating conditions.

Applications

- Used for swimming pool water filtration and recycling.

Specifications

Type	Asynchronous
Degree of protection	IP55
Pole	2 pole
Insulation Class	Class F
Type of Duty	S1 (Continuous)
Max. Head range	21 mtr
Max. Flow range	36 m ³ /hr



VISTA



NOVA

PERFORMANCE CHART

2880 RPM, Single Phase - 220 Volts, Three Phase - 380-415 Volts 50 Hz, A.C. Supply

PUMP MODEL		MOTOR POWER		DISCHARGE IN LPS / M ³ /Hr									
				0	0.83	1.67	2.5	3.33	4.17	5	6.67	8.33	10
1Ø	3Ø	kW	HP	0	3	6	9	12	15	18	24	30	36
				TOTAL HEAD IN METRES									
VISTA-9/03M	VISTA-9/03T	0.37	0.5	12.5	12.4	12.1	11.1	8.4	7.5	-	-	-	-
VISTA-10/05M	VISTA-10/05T	0.5	0.75	15.2	15.1	15.0	14.0	11.8	8.8	7.8	-	-	-
VISTA-11/07M	VISTA-11/07T	0.75	1.0	17.0	16.8	16.4	15.6	13.7	10.5	7.5	-	-	-
VISTA-18/11M	VISTA-18/11T	1.1	1.5	17.0	16.8	16.5	15.5	14.2	13.0	10.0	9.0	-	-
NOVA-18/11M	NOVA-18/11T	1.1	1.5	17.0	-	16.9	-	16.1	-	14.6	11.4	8.8	-
NOVA-18/15M	NOVA-18/15T	1.5	2.0	18.7	-	18.2	-	17.9	-	16.0	13.0	9.0	6.9
NOVA-22/22M	NOVA-22/22T	2.2	3.0	21.0	-	20.9	-	20.5	-	19.1	17.0	13.7	7.7



✿ CATERS TO DIVERSE SEGMENTS ✿

**WATER & WASTE WATER | SOLAR | PROCESS INDUSTRIES | SEWAGE & EFFLUENT TREATMENT PLANTS
HVAC | FIRE FIGHTING | METAL & MINING | FOOD & BEVERAGE | AGRICULTURE | RESIDENTIAL**



C.R.I. PUMPS
Pumping trust... Worldwide.



TOLL FREE 1800 121 1243  **www.crigroups.com**  **chatbot : +91 9500401115**

In view of continuous developments, the information / performance / descriptions / specifications / illustrations mentioned in this catalogue are subject to change without notice.