

# PUMPS FOR FIRE FIGHTING SOLUTIONS

CRI pumps have come up with the launch of yet another powerful range of pumps and pumping systems for Fire Fighting Series, which is Designed to meet high pumping requirements in terms of performance and efficiency, that are customised to suit the specific applications of the customer.

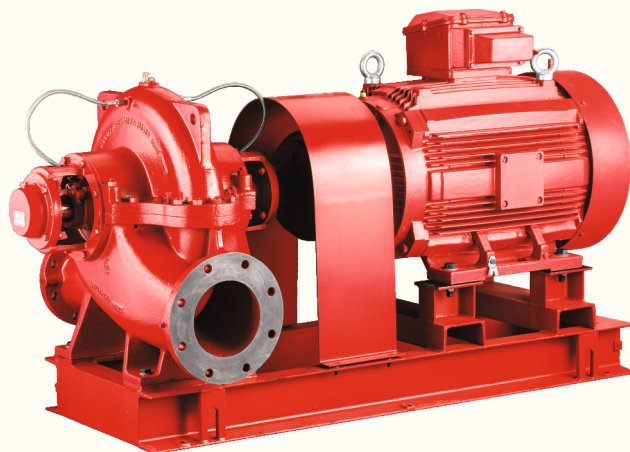
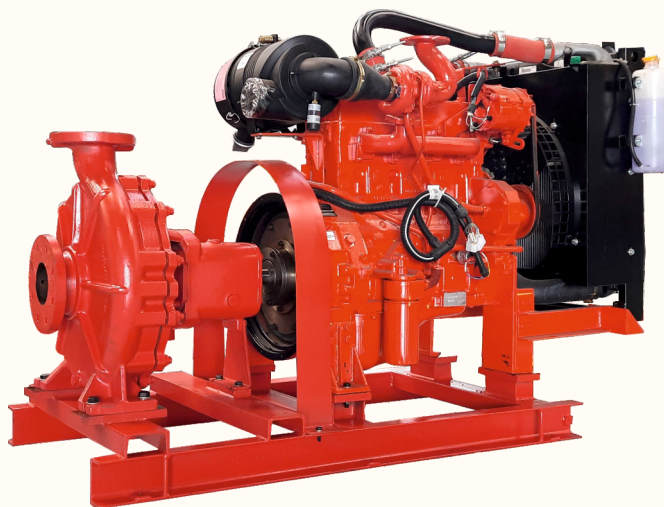
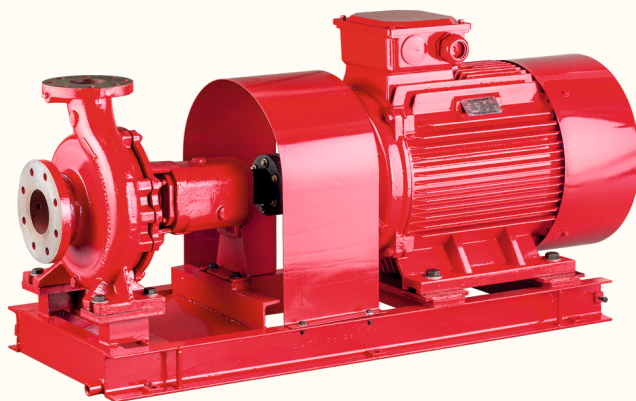
## APPLICATIONS

- | Airports | Firework Industries
- | Commercial complex
- | Petrochemical Industries
- | Power stations and transformer stations
- | Godowns
- | High-rise Buildings
- | Marine applications

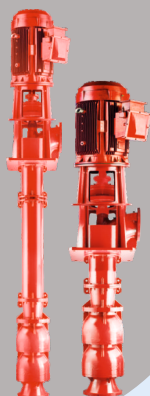
## MATERIAL OF CONSTRUCTION\*

Casing	: Cast Iron
Impeller	: Ci / Bronze / SS
Shaft	: SS 410
Shaft Sleeve	: SS 410
Sealing Method	: Gland & Mechanical Seal

\*Other MOC Available on Request



## VT SERIES

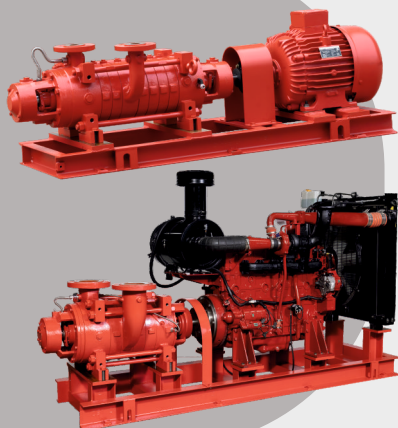


## VERTICAL TURBINE PUMPS

### SPECIFICATIONS

Max. Flow	: 50000 m <sup>3</sup> /h
Max. Head	: 350 m
Lubrication	: Oil / Water / Forced Water
Drive Shaft	: Solid / Hallow

## MSMO SERIES



## MULTISTAGE MULTIOUTLET CENTRIFUGAL PUMPS

### SPECIFICATIONS

Max. Flow	: 273 m <sup>3</sup> /h
Max. Head	: 300 m
Max. Power	: 263 kW
Speed in rpm	: 1450 / 2900
Max. Outlet Size	: DN 200
No. of Outlets	: 1, 2, 3

## MV SERIES

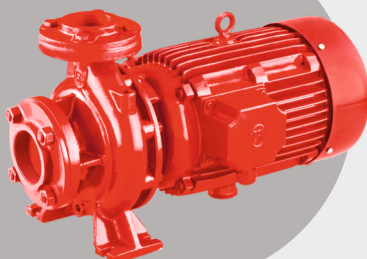


## VERTICAL MULTISTAGE INLINE PUMPS

### SPECIFICATIONS

Max. Flow	: 395 m <sup>3</sup> /h
Max. Head	: 360 m
Max. Power	: 315 kW
Max. Pressure	: PN 40
Max. Liquid Temp	: 120° C
Speed in rpm	: 2900
Max. Outlet Size	: DN 200

## BP SERIES



## CENTRIFUGAL MONOBLOCK PUMPS

### SPECIFICATIONS

Max. Flow	: 121 m <sup>3</sup> /h
Max. Head	: 70 m
Max. Power	: 15 kW
Max. Liquid Temp	: 90° C
Speed in rpm	: 2900
Max. Outlet Size	: DN 80